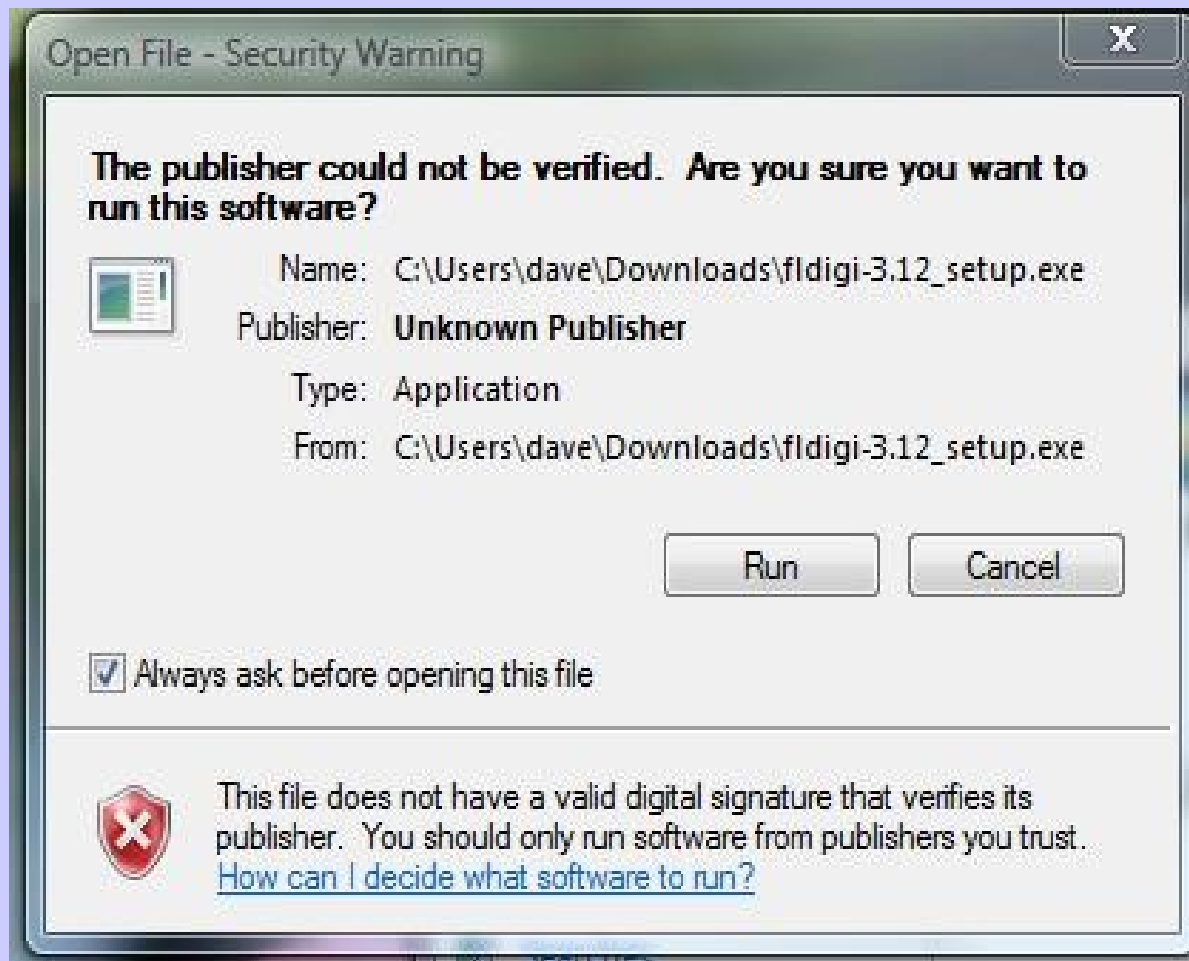


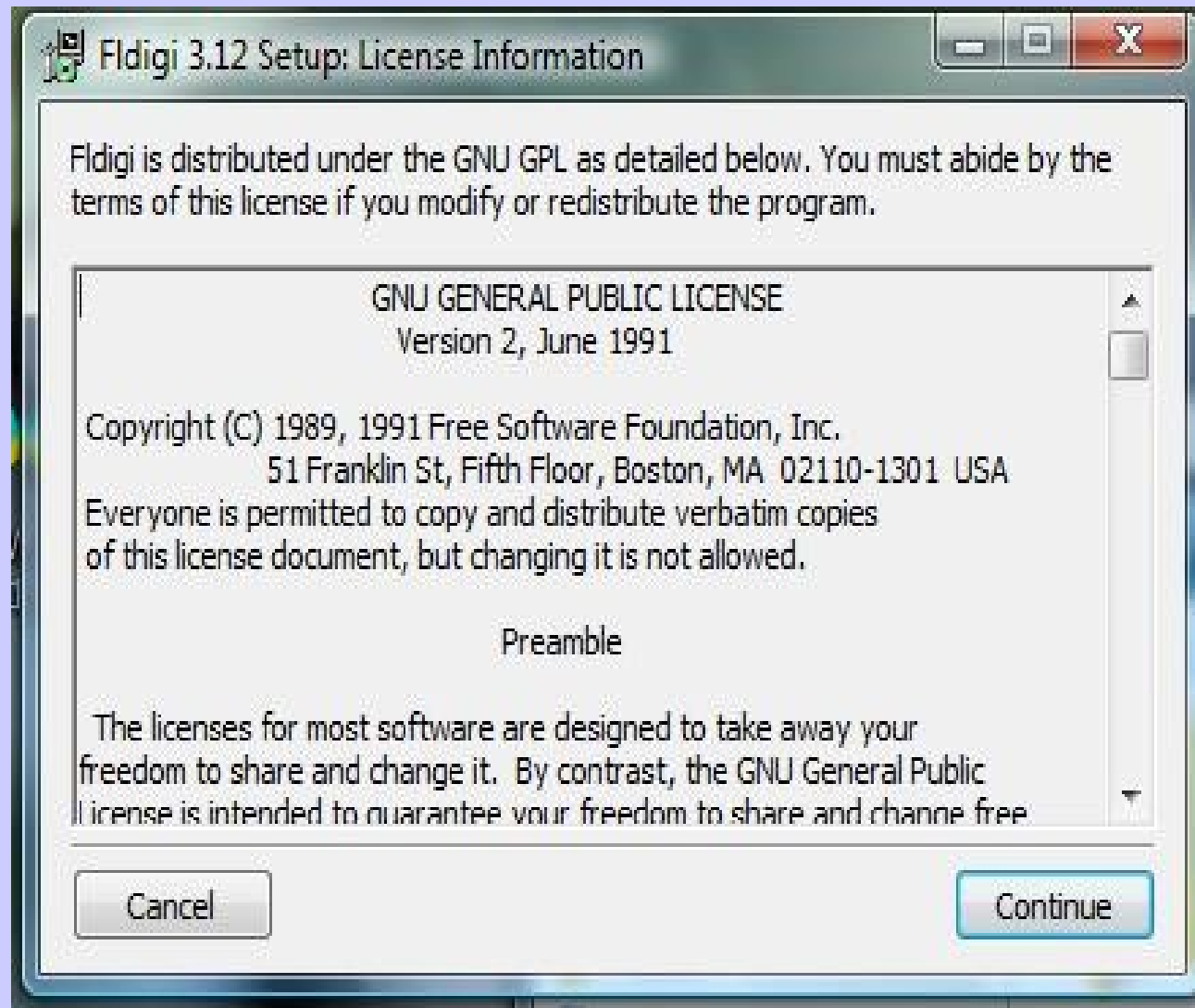
# Installing On Windows

Download the Installer from <http://www.w1hkj.com/Downloads.html>  
or from the CDROM



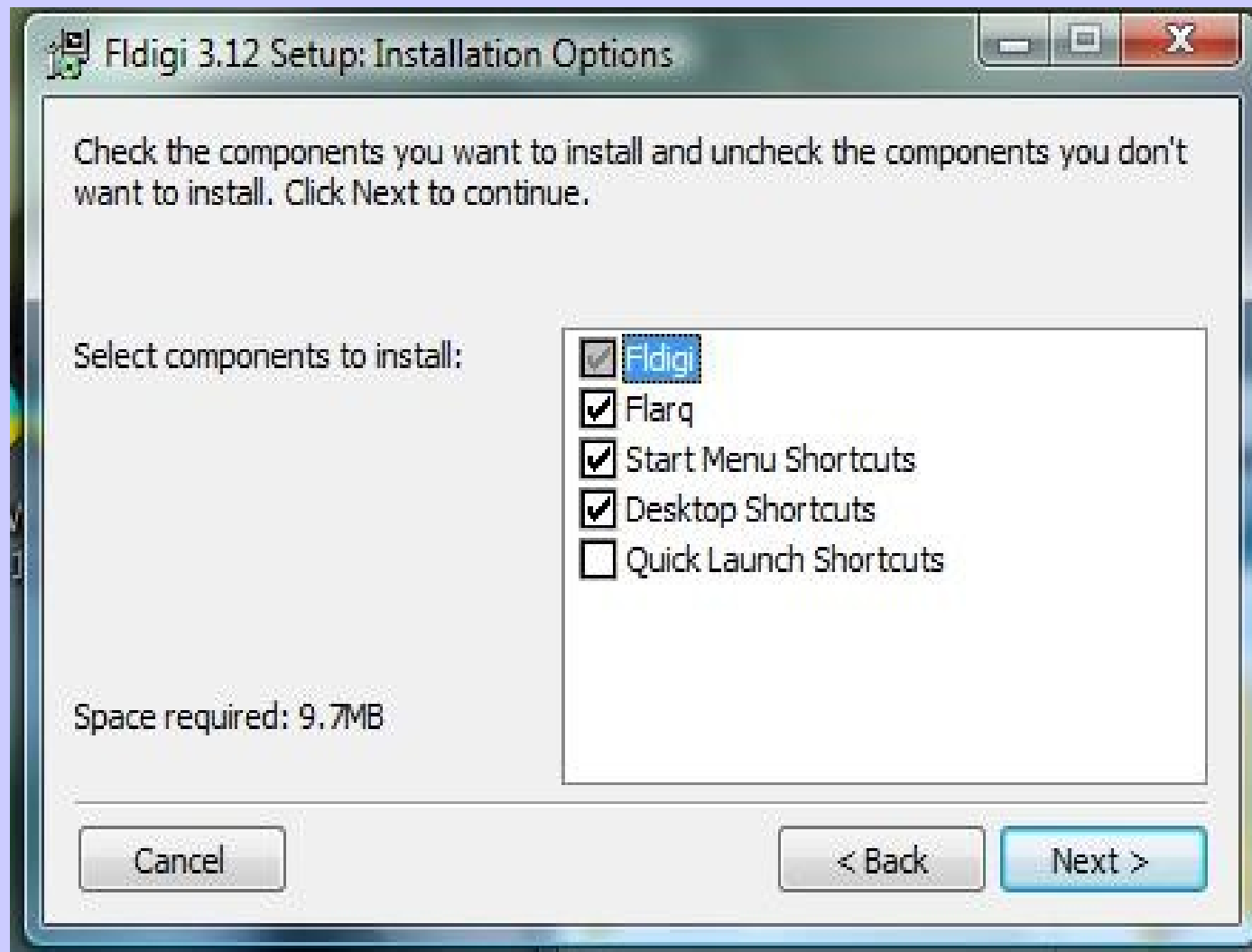
# Installing On Windows

Select Run and agree to the GNU General Public License

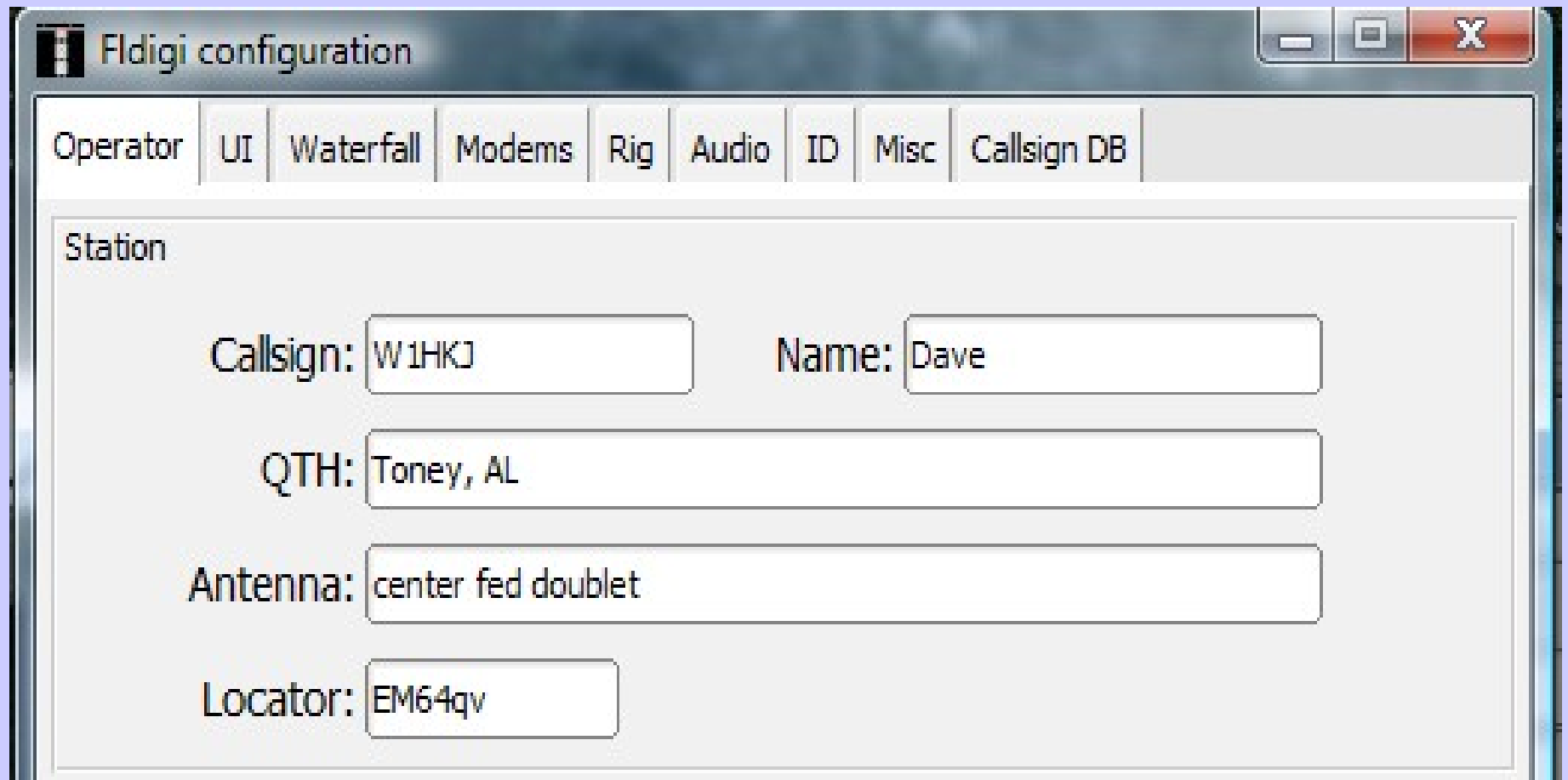


# Installing On Windows

Fldigi / Flarq are both installed by default  
An Uninstaller link is put on your Menu System



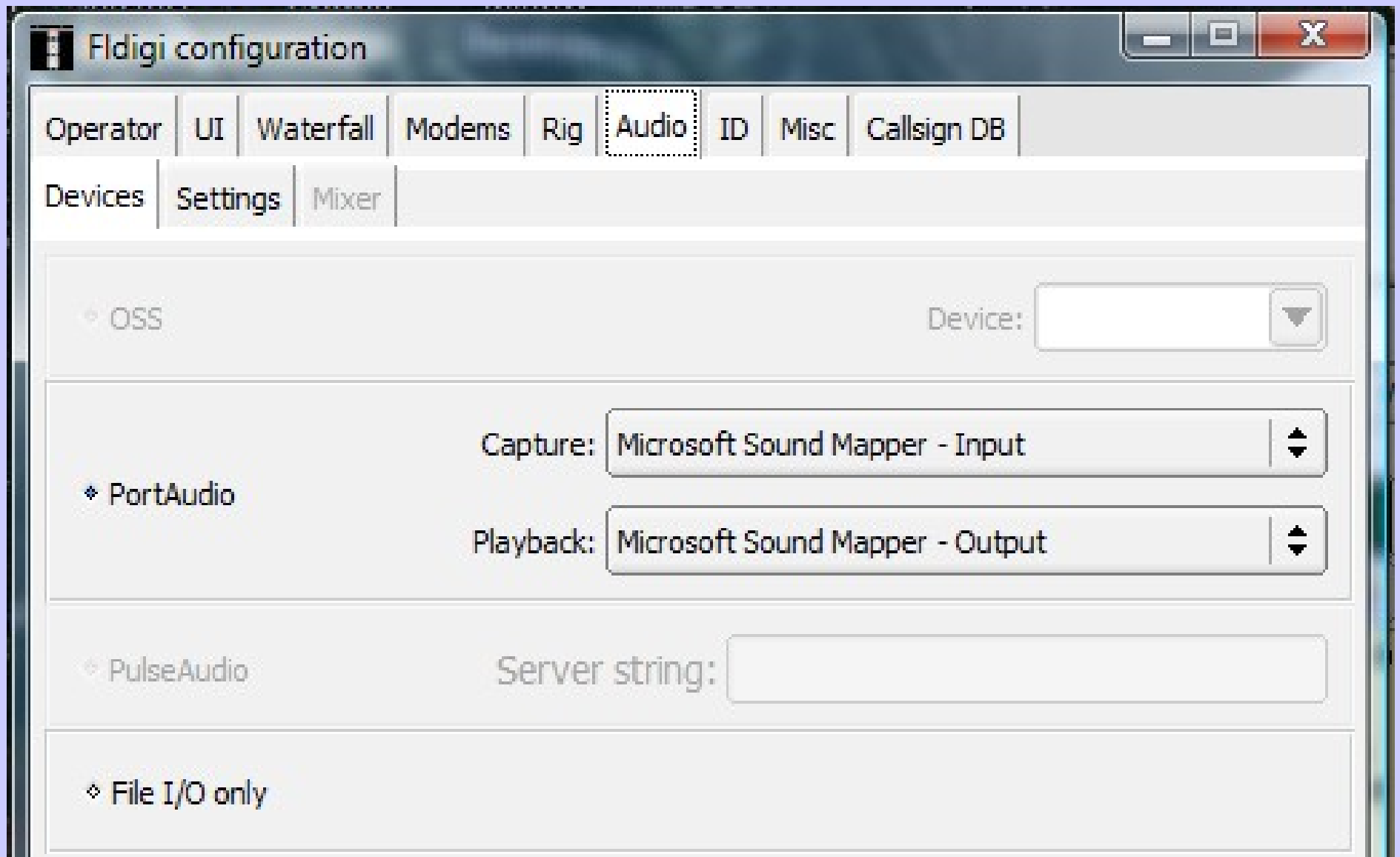
# Configure



The image shows a screenshot of the Fldigi configuration window. The window title is "Fldigi configuration" and it has standard Windows window controls (minimize, maximize, close). The "Station" tab is selected, and the following fields are visible:

Operator	UI	Waterfall	Modems	Rig	Audio	ID	Misc	Callsign DB
Station								
Callsign:	W1HKJ			Name:	Dave			
QTH:	Toney, AL							
Antenna:	center fed doublet							
Locator:	EM64qv							

# Configure



# Configure

**Fldigi configuration** [ - ] [ □ ] [ X ]

Operator | UI | Waterfall | Modems | Rig | Audio | ID | Misc | Callsign DB

Devices | Settings | Mixer

Sample rate

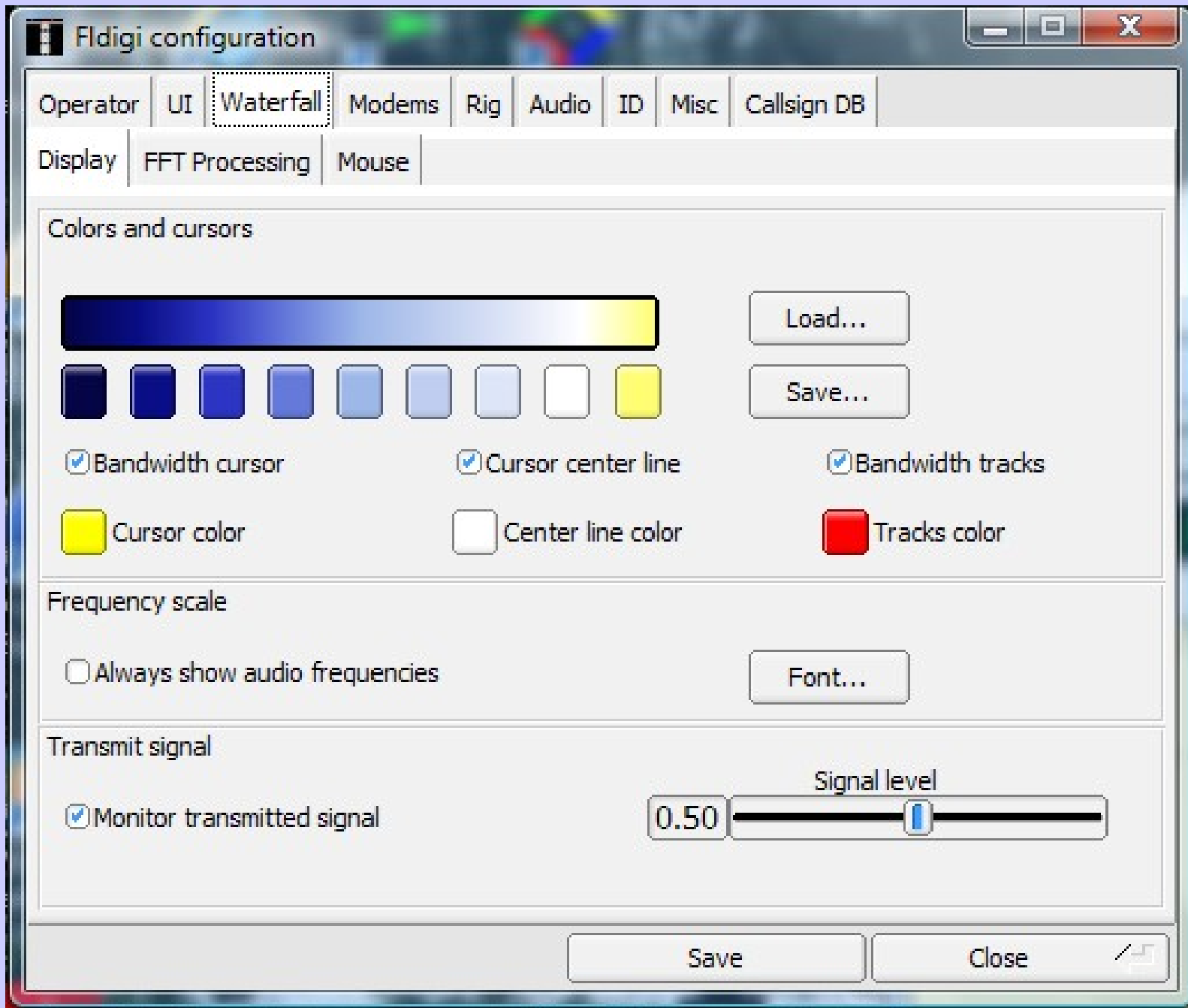
Native | ↕ Capture      Converter: Medium Sinc Interpolator | ↕

Native | ↕ Playback

Corrections

0 | ↕ RX ppm      0 | ↕ TX ppm      0 | ↕ TX offset

# Configure

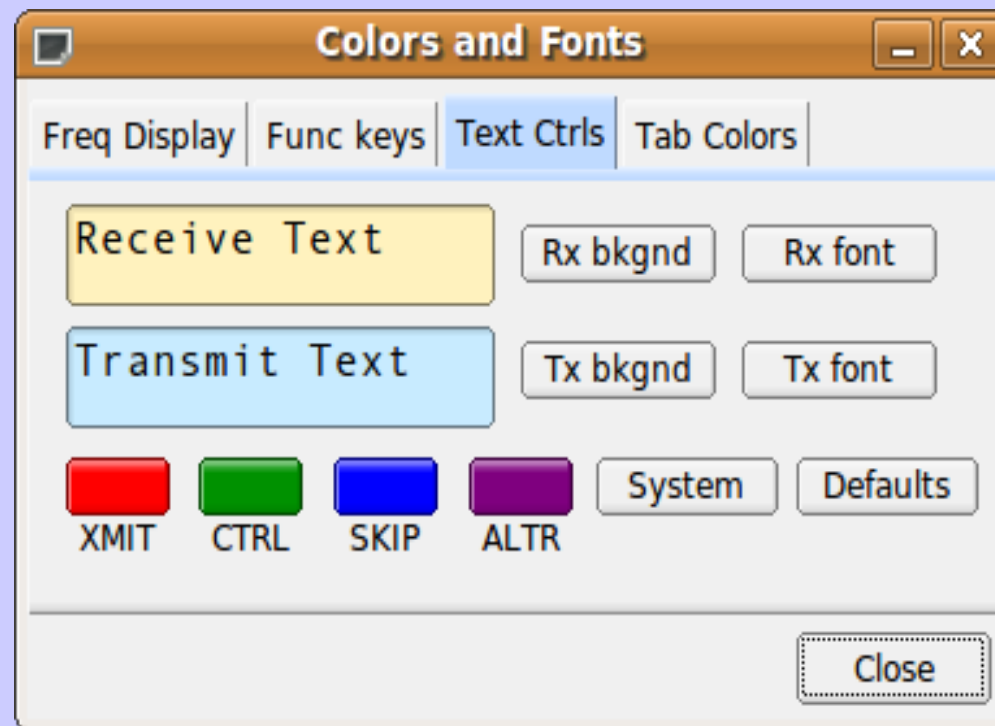


# Rx & Tx Fonts

NOW IS THE time for all good men Ø12345

NOW IS THE time for all good men Ø12345[

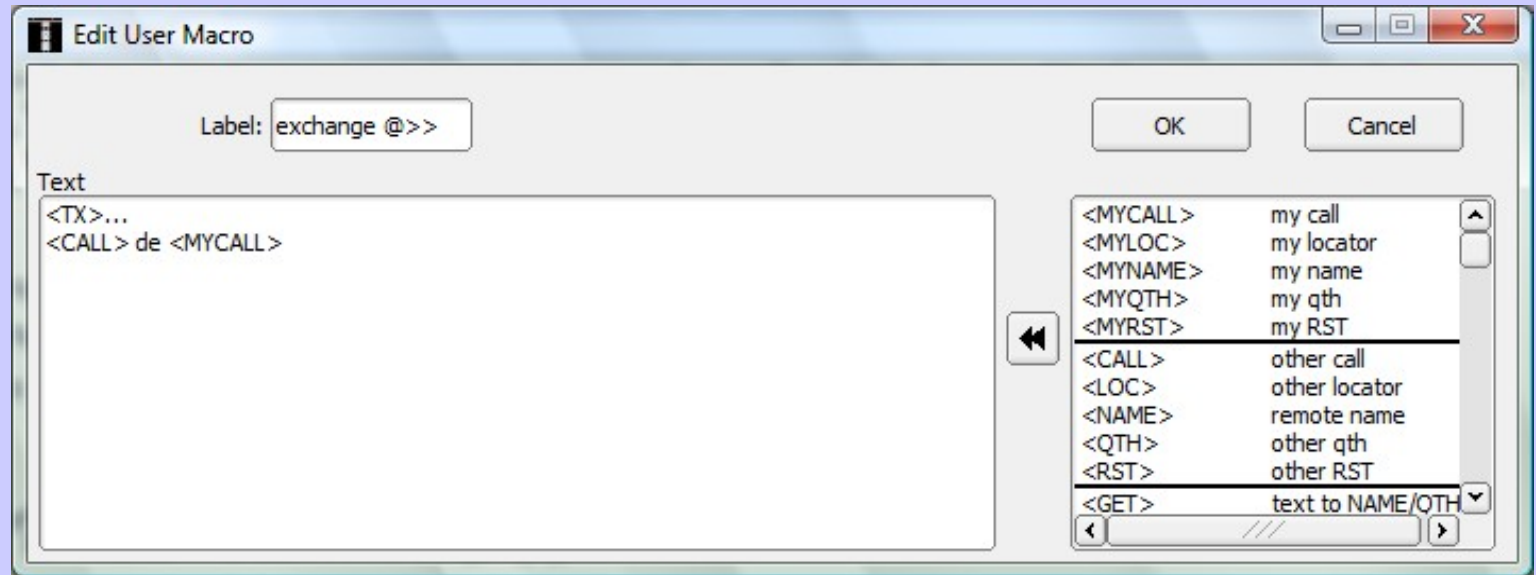
Can be independently selected for font and size





# Setting Up Macro's

Macro's allow you to automate some of the QSO functions and commonly sent text. Macro's can be easily customized.



A right-click on the macro buttons on most programs brings up an editing function that allows you to change the macro text or functions. The macros allow the operator, for example, to send formatted text and information with a single mouse click. The macros also automate transmit and receive functions from the computer to the transceiver.



Live Demos Next